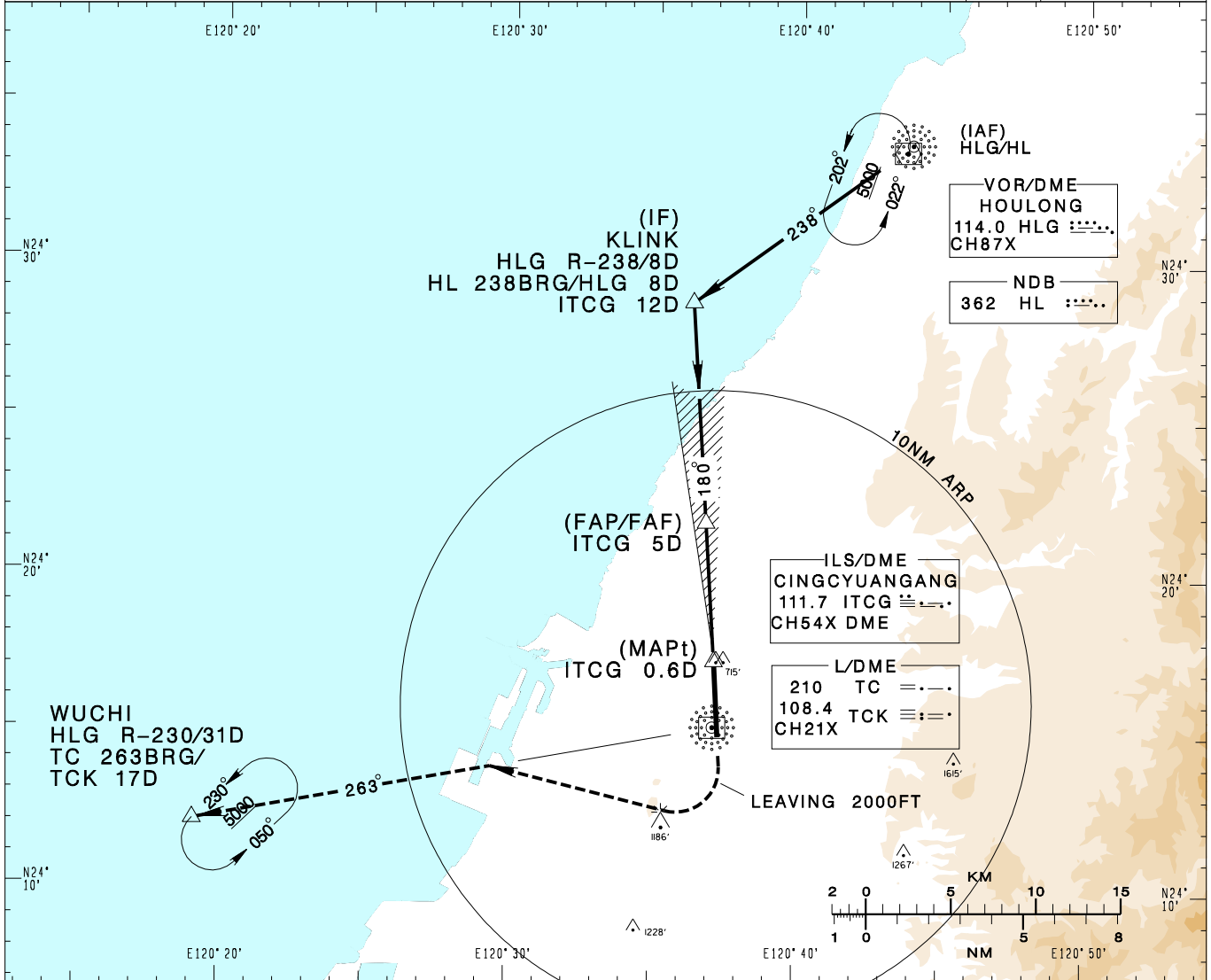


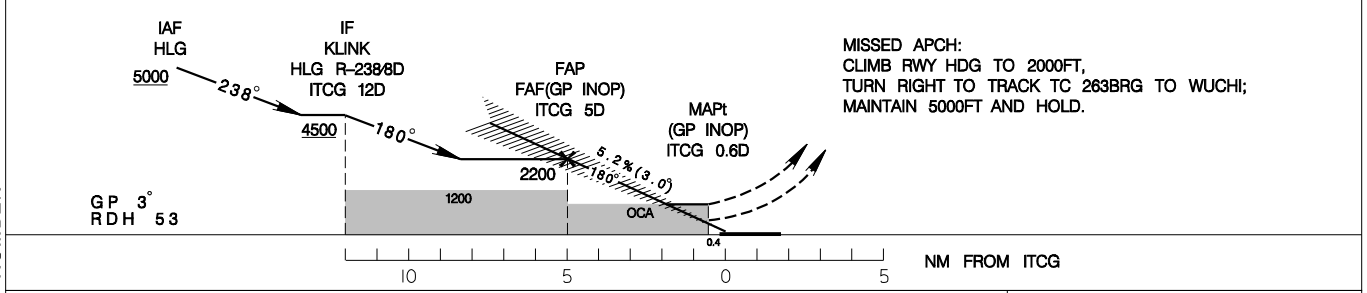
臺中/清泉崗機場 TAICHUNG/CINGCYUANGANG AD

RCMQ
ILS or LOC RWY18

TAIPEI APP 130.1 129.6	TAICHUNG TWR 118.75 120.25	ATIS 127.75	VAR 4° W 	
Apt Elev: 665' Rwy18 THR Elev: 653' Trans Level: FL130 Trans Alt: 11,000'				
BEARINGS ARE MAGNETIC; DISTANCES ARE NAUTICAL MILES; ELEVATIONS, HEIGHTS IN FEET				



5DME	4DME	3DME	2DME	DIST to ITCG
2250	1930	1610	1290	ADVISORY ALT



MINIMA (OCA IN FT, VIS IN M, OCH IN FT)					NOTE 1. CIRCLING NA EAST OF RWY. 2. TRAFFIC FROM WUCHI JOIN HLG HOLDING PATTERN FOR COURSE REVERSAL. 3. CAUTION OBSTACLES (TREES) UP TO 715FT PENETRATE THE VISUAL SEGMENT SURFACE (VSS). *DME REQUIRED.
CATEGORY	A	B	C	D	
ILS	853/RVR 1200 200	853/RVR 1200 200	863/RVR 1200 210	873/RVR 1200 220	
LOC (GP INOP)	1060/1600 407	1060/1600 407	1060/1900 407	1060/1900 407	
CIRCLING	1360/1900 695	1360/2800 695	1600/4400 935	1600/4800 935	

CHANGES: NEW PAGE NUMBER